



Alvar Aalto: Daylight and the Experience of Landscape

Martin Schwartz
Associate Professor
College of Architecture and Design
Lawrence Technological University
Southfield, Michigan USA



“Compared to the urban environment, the spatial structure of the forest is typified by *incomplete spatial confinement, free-flowing nature of space, layering of views in the depth direction, clustering of views and the nature of light.*



Although these features are rather general, they take on a variety of different forms in Finnish forests with their shifting spatial experiences.”

Lauri Louekari,

“Architecture of the Forest:,”

Nordic Journal of Architectural Research, city: Nordic Association for Architectural Research, Volume 20, No 3, 2008

“The Nordic forest is distinguished by an interminable multitude of different phenomena...The ground is rarely continuous...The sky is hardly experienced as a total hemisphere, but is narrowed in between the contours of trees and rocks, and is moreover continuously modified by clouds...The sun is relatively low and creates a varied play of spots of light and shadow...”

Christian Norberg-Schulz,
Genius Loci, Towards a Phenomenology of Architecture





Lake Keitele 1905, A Gallen-Kallela



Nakkehoved Strand, 1910, Hammershoi



The Forest 1892, Prince Eugen

<https://www.oceansbridge.com/shop/artists/h/ham-har/hammershoi-vilhelm/from-nakkehoved-strand>

<https://www.thatericalper.com/2018/11/08/experience-nothing-a-clever-ad-for-tourism-in-finland/>

<https://www.visitfinland.com/article/finland-facts-faq/>



Rail line between Jyväskylä and Pieksämäki



Light and Landscape

Spaces within spaces

Diverse views

Light from multiple sources

Changing light

The movement of people

Aalto's Architecture

Variations within regularity

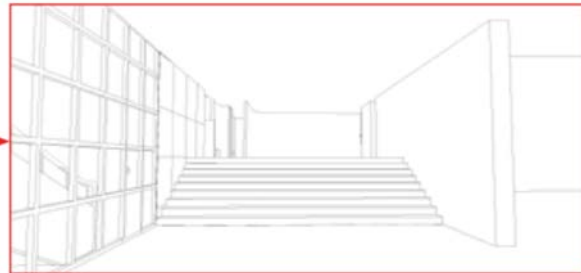
Improvisations on circumstance

Viipuri Library

Alvar Aalto, 1927 - 1935



Sketch by Alvar Aalto

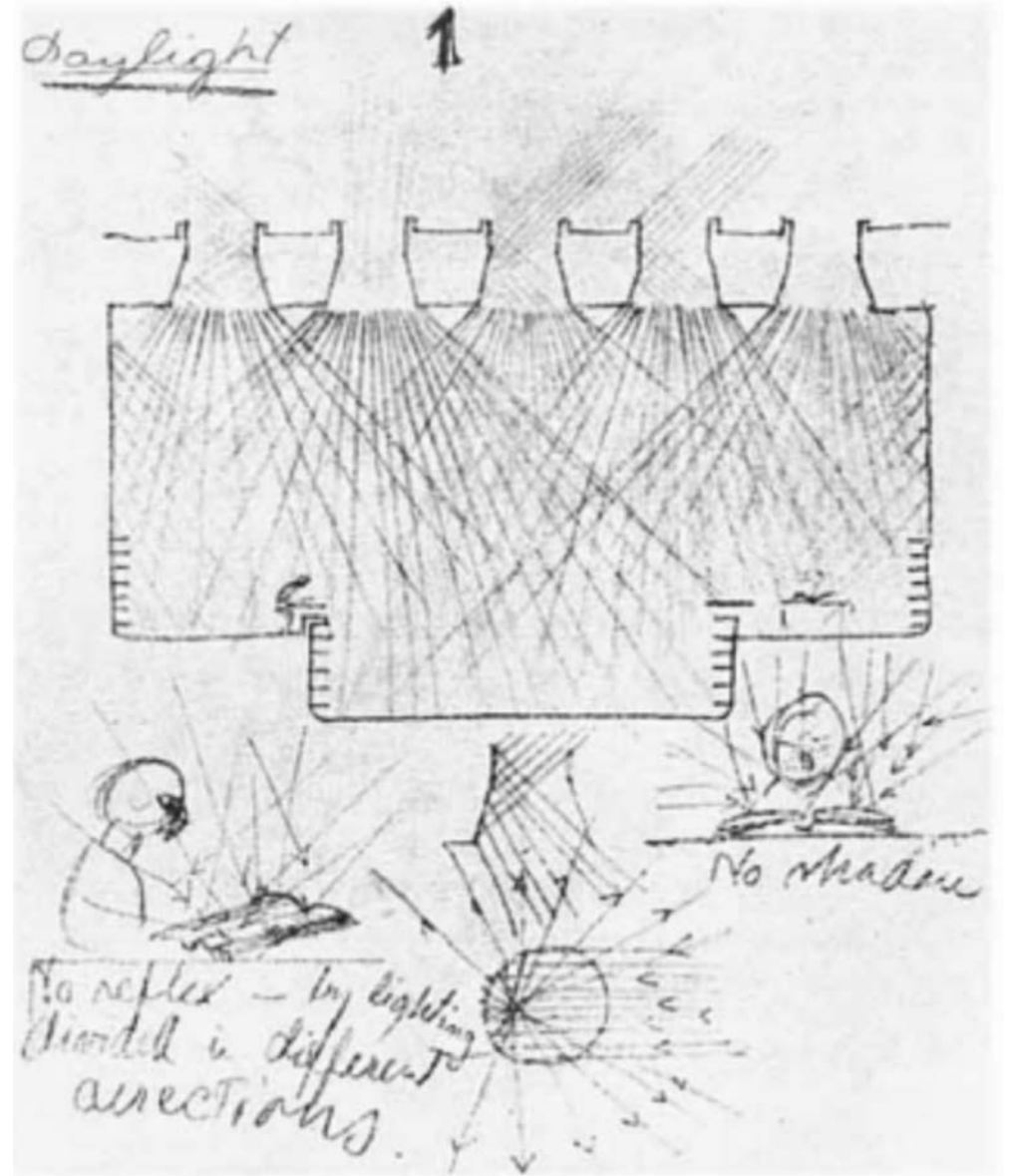


Drawing by Ricardo Plowmen

<https://twitter.com/architect/status/638783219723313152>

<https://www.studyblue.com/notes/n/history-midterm-2/deck/16921657>

<http://inrussia.com/the-vyborg-library>





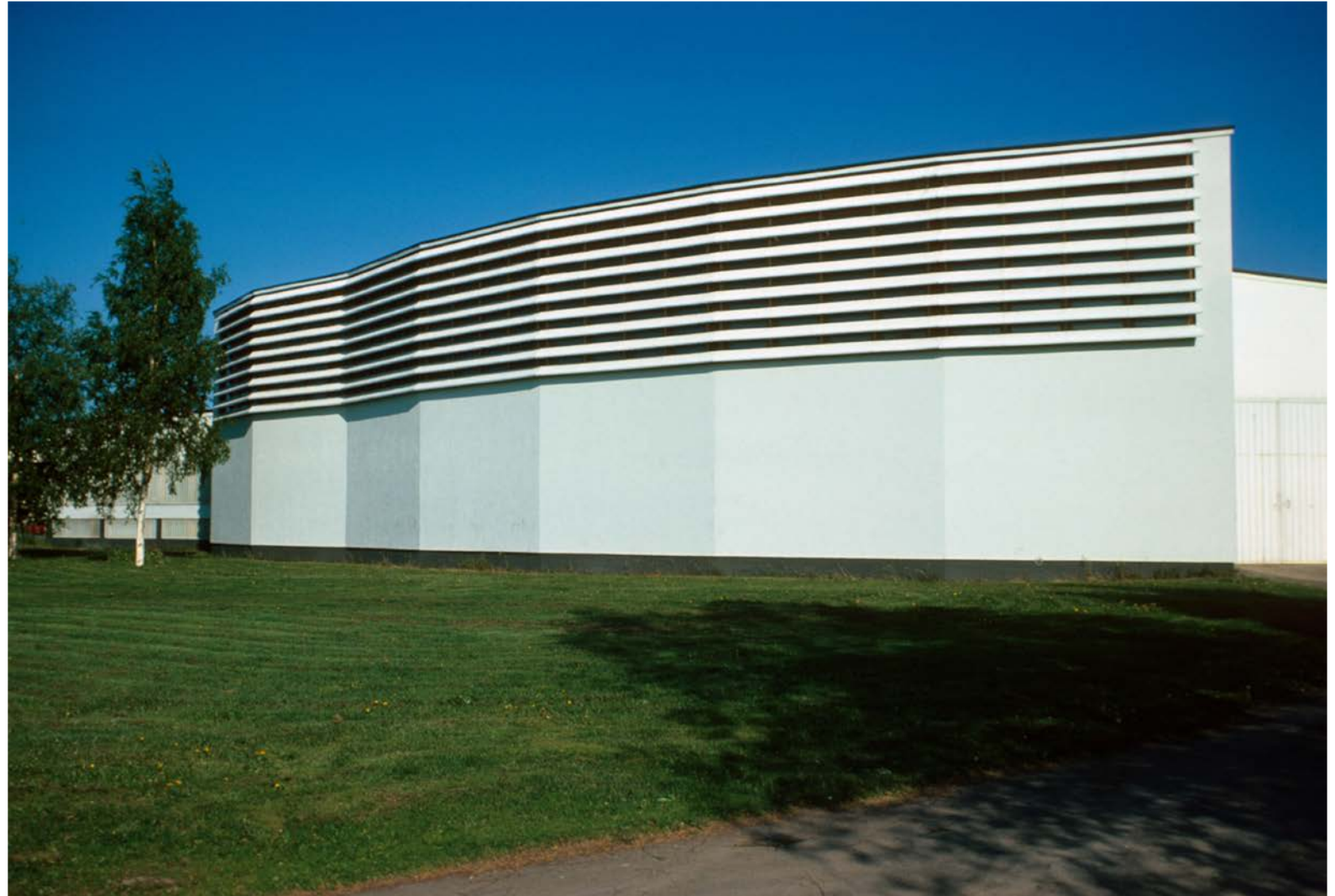
Pre-1940 photograph of the library adjacent to the Viipuri Cathedral

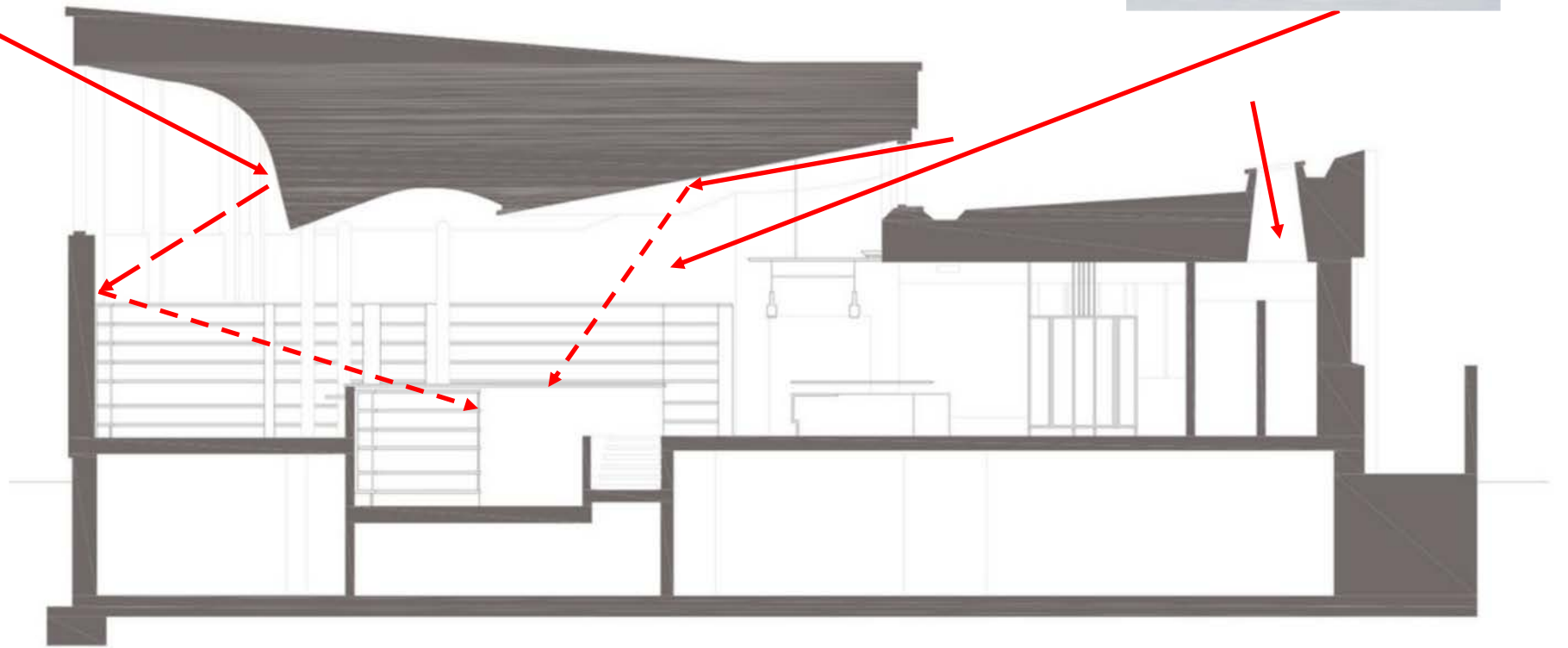




Seinajoki Library

Alvar Aalto, 1964-1965





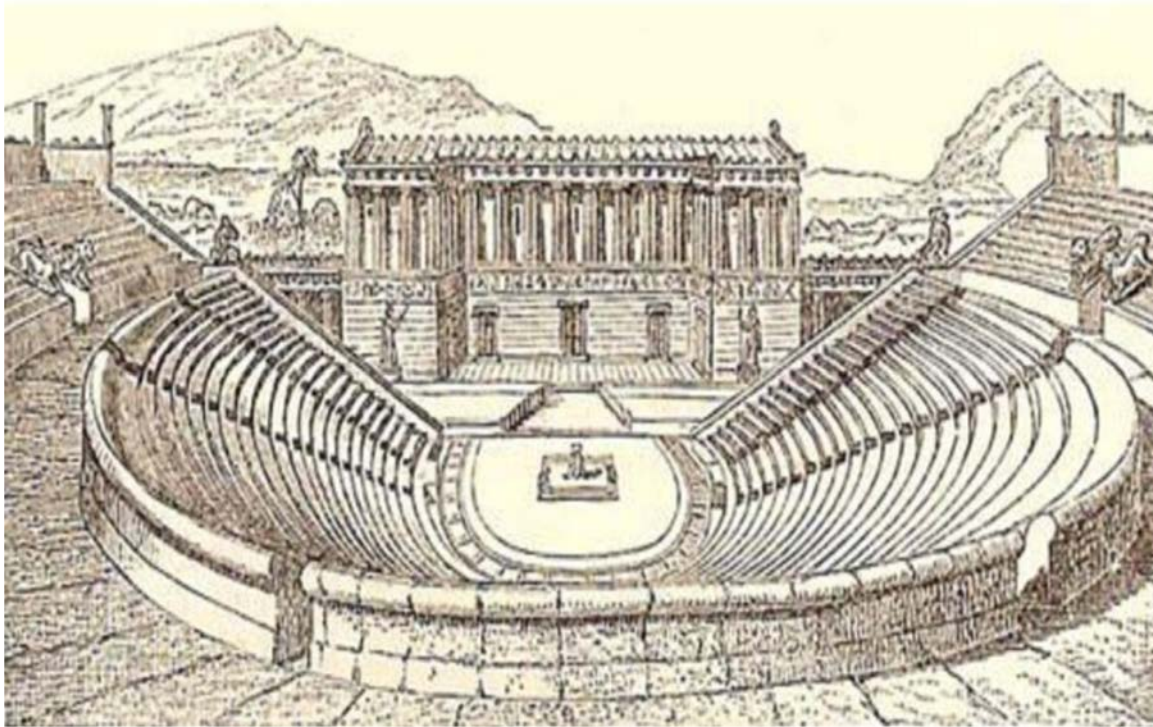




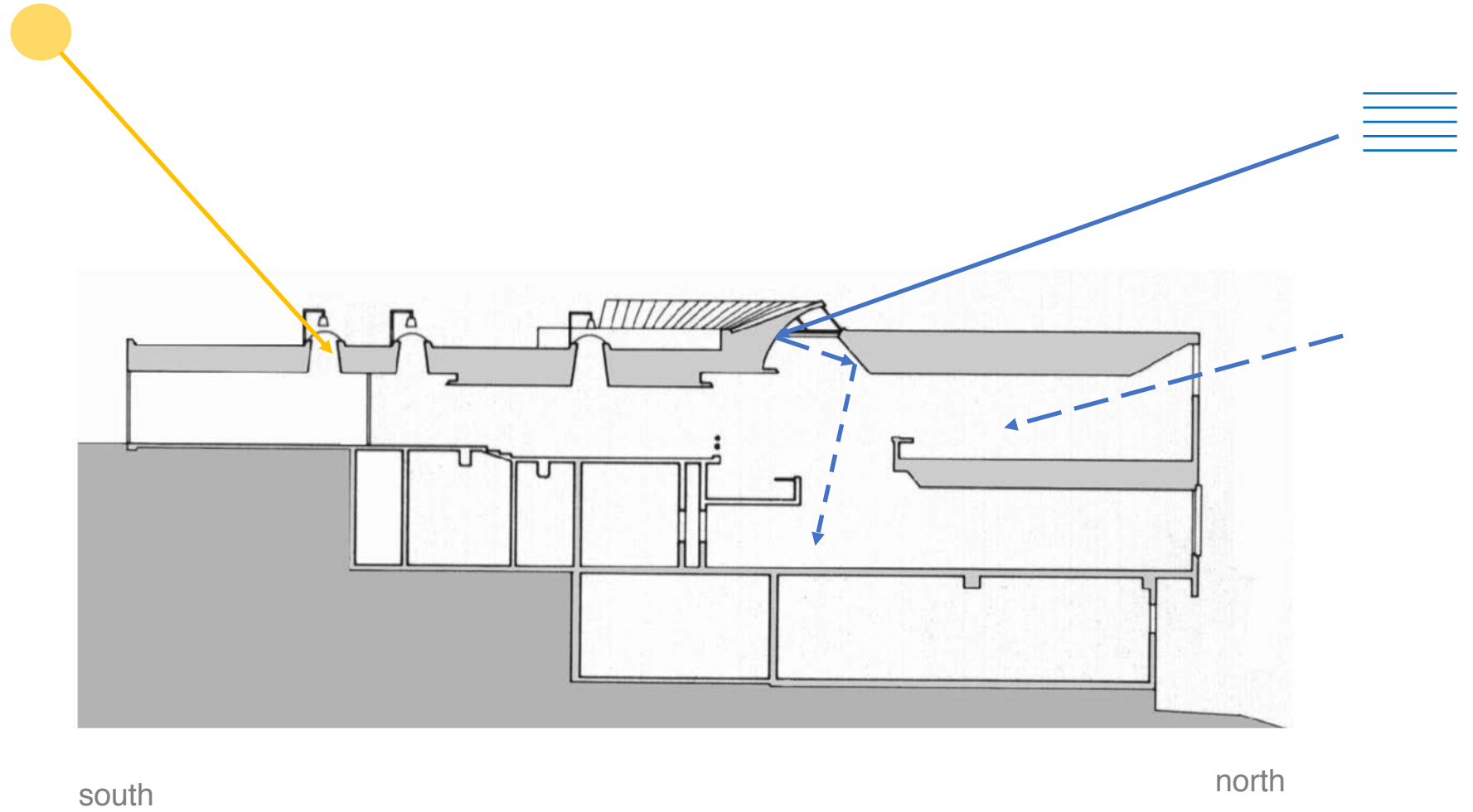


Mt. Angel Abbey Library

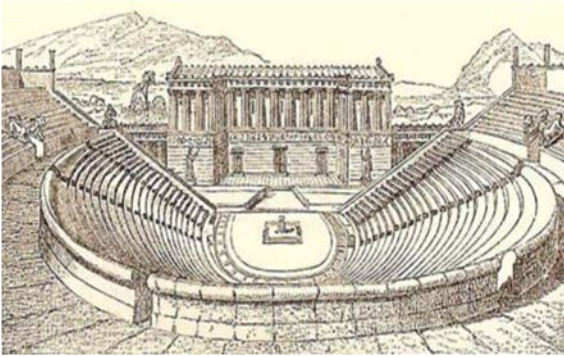
Alvar Aalto, 1963 - 1970

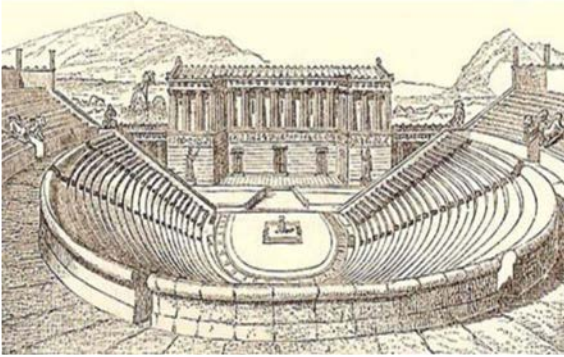


drawing by Alvar Aalto, Calascibetta, Sicily (1952)











Riola Parish Church

Alvar Aalto, 1927 – 1935
Riola, Italy





“Landscape is alive with energies... yet *the most evident agent of vitality is light that pervades the land and sky.*”

Tim Edensor